

**Band pass Filters for Rx of CDMA450.**

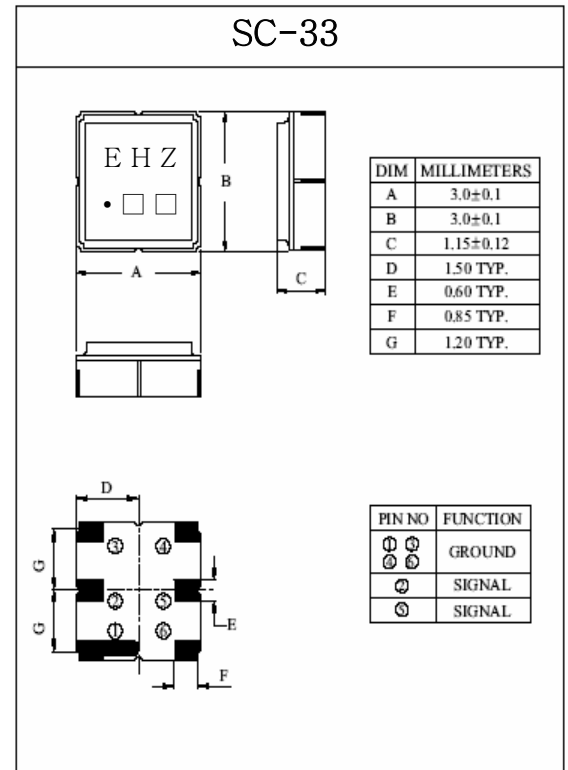
- High stability and reliability with good performance and no adjustment.
- Low insertion loss and deep stop band attenuation for interference.
- Wide and sharp pass band characteristics.
- Low-loss RF filters for Rx of CDMA450.

■ **Maximum Ratings**

Items	Rating	Unit
Input Signal Level	20	dBm
DC Permissive Voltage	10	V <sub>dc</sub>
Operating Temperature Range	-30 ~ + 80	°C
Storage Temperature Range	-30 ~ + 85	°C

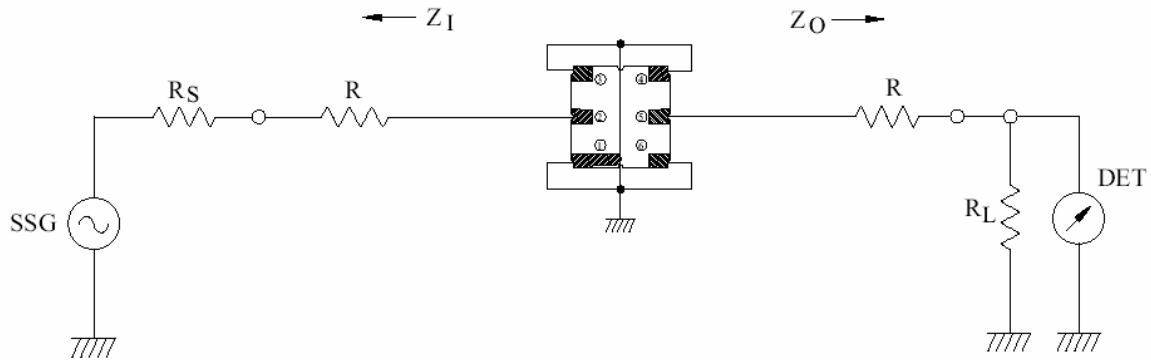
■ **Electrical Characteristics**

Items	Test Condition	Min.	Typ.	Max.	Unit
Center Frequency	-	-	465.0	-	MHz
Bandwidth (Operating Band)	-	462.5	-	467.5	MHz
Insertion Loss	F <sub>0</sub> ± 2.5MHz	-	1.93	4.0	dB
Amplitude Ripple (p-p)	F <sub>0</sub> ± 2.5MHz	-	0.58	2.0	dB
Attenuation	0.3 ~ 452.5MHz	40	48	-	dB
	452.5 ~ 457.5MHz	45	48	-	dB
	485 ~ 507.5MHz	30	36	-	dB
	507.5 ~ 1,200MHz	40	55	-	dB
	1,200 ~ 2,000MHz	30	50	-	dB
Input/Output Impedance	-	-	50	-	Ω



<b>EF Tech CO.,LTD</b> 1115-5, Namchon-ri, Oksan-myun, Cheongwon-gun, Chungbuk, 363-911, South Korea	Rev Date	
	Rev No.	

■ Matching Configuration



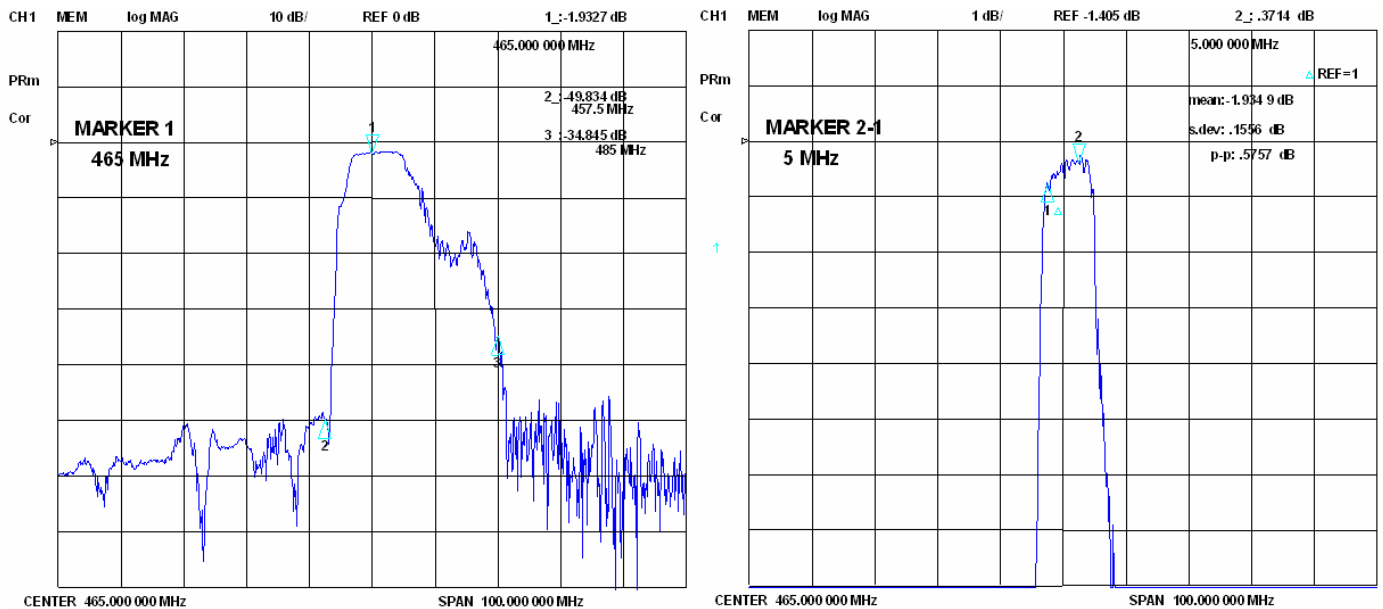
② : INPUT    ①, ③, ④, ⑥ : GROUND    ⑤ : OUTPUT

$R_S, R_L : 50 \Omega$  (Internal Impedance of Source and Load)

$R : 0 \Omega$

$Z_i(Z_o) = R_S(R_L) + R$

■ Typical Performance



<p>EF Tech CO.,LTD 1115-5, Namchon-ri, Oksan-myun, Cheongwon-gun, Chungbuk, 363-911, South Korea</p>	Rev Date	
	Rev No.	